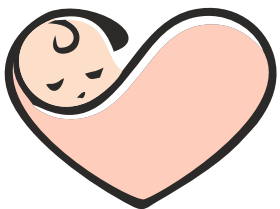


# BERÇÁRIO E CRECHE

**ATELIER**<sup>®</sup>  
arquitectura e engenharia

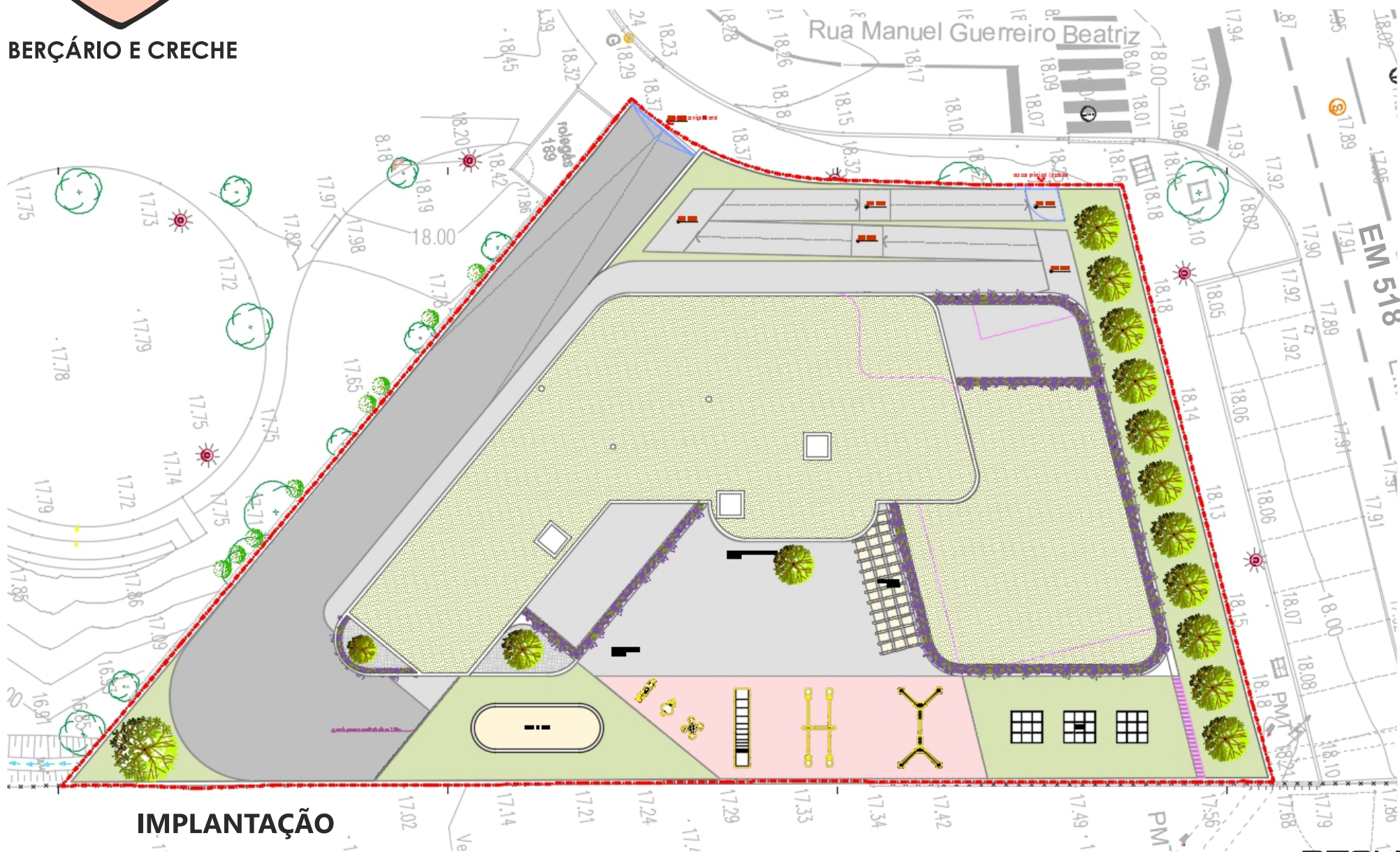
[www.atelier.pt](http://www.atelier.pt)



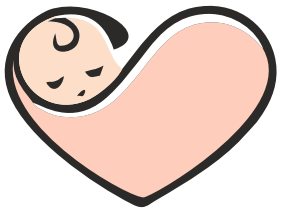
# BERÇÁRIO E CRECHE

**CAPACIDADE: 42 CRIANÇAS**

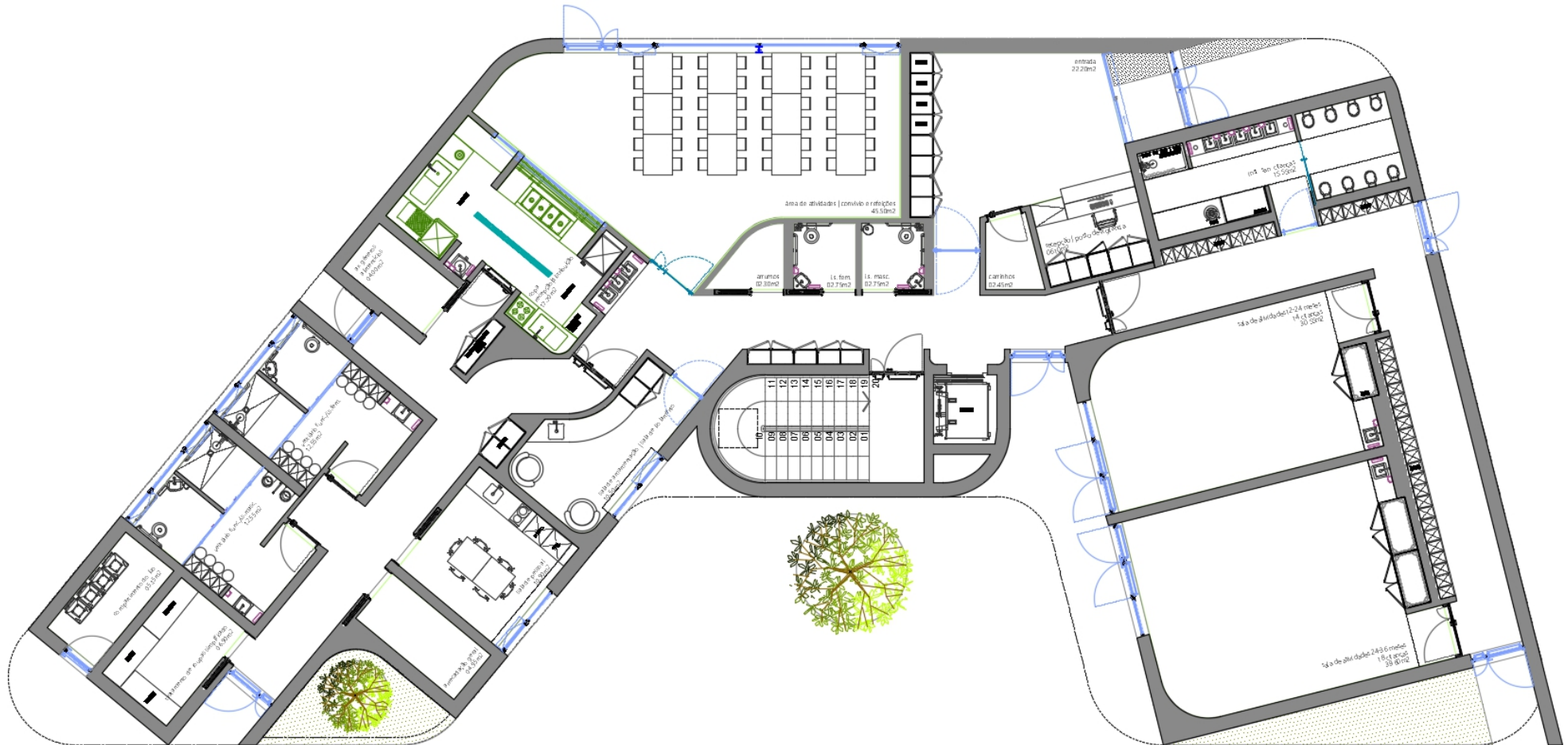
**BERÇÁRIO: 10 | CRECHE: 32**



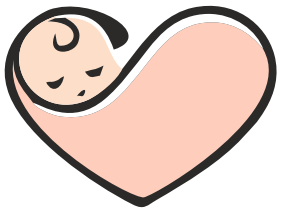
## IMPLANTAÇÃO



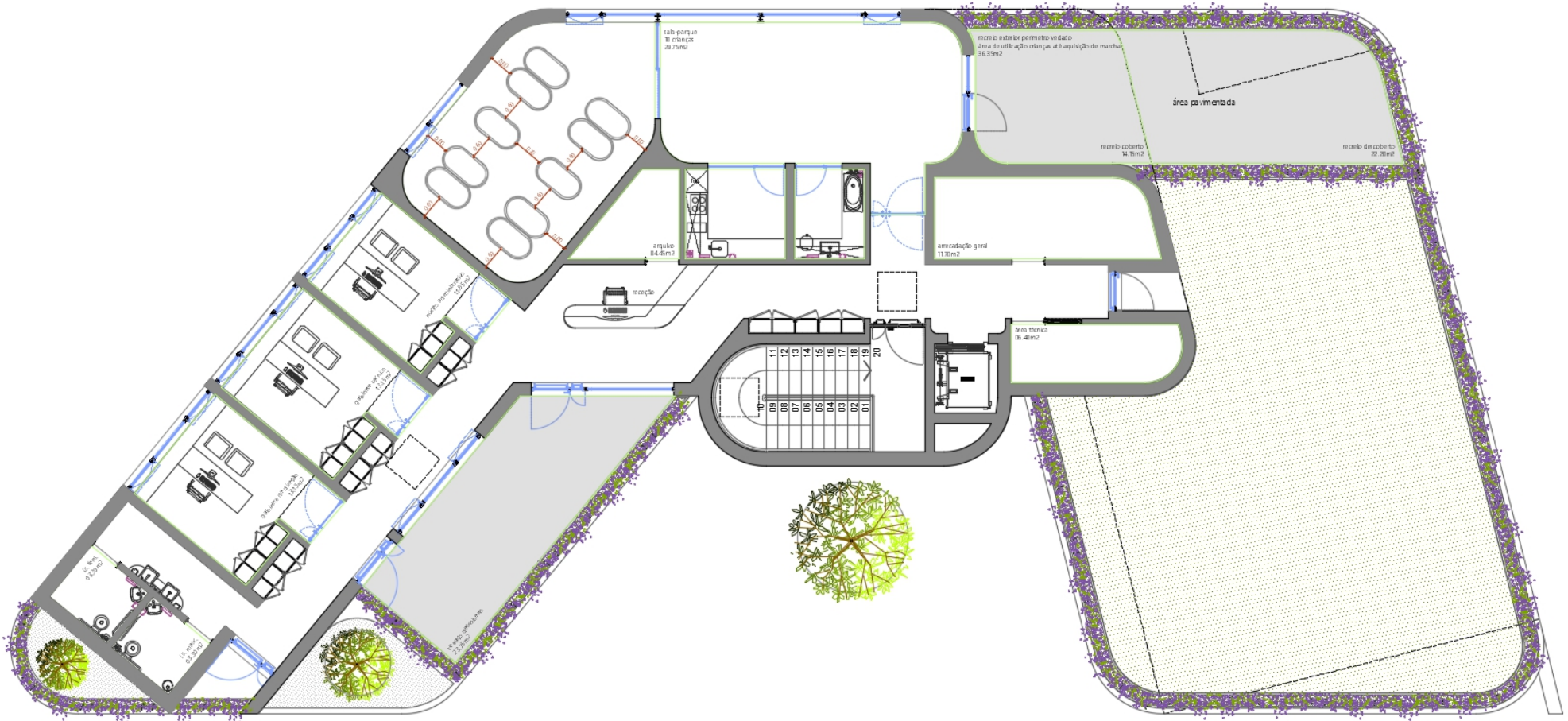
# BERÇÁRIO E CRECHE



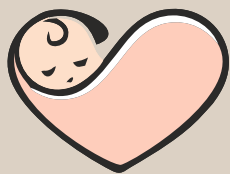
**PISO 1**



# BERÇÁRIO E CRECHE



**PISO 2**

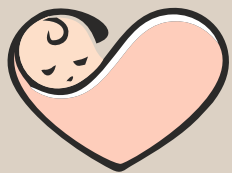


BERÇÁRIO E CRECHE

ATELIER<sup>®</sup>  
arquitectura e engenharia

[www.atelier.pt](http://www.atelier.pt)





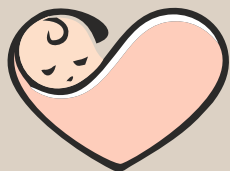
BERÇÁRIO E CRECHE

ATELIER<sup>®</sup>  
arquitectura e engenharia

[www.atelier.pt](http://www.atelier.pt)



  
BERÇÁRIO E CRECHE

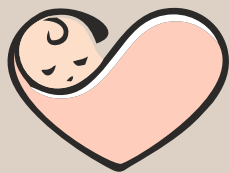


BERÇÁRIO E CRECHE

ATELIER<sup>®</sup>  
arquitectura e engenharia

[www.atelier.pt](http://www.atelier.pt)





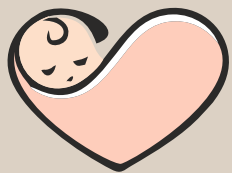
BERÇÁRIO E CRECHE

ATELIER<sup>®</sup>  
arquitectura e engenharia

[www.atelier.pt](http://www.atelier.pt)





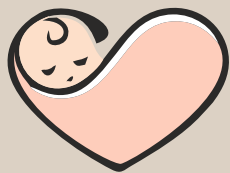


BERÇÁRIO E CRECHE

ATELIER<sup>®</sup>  
arquitectura e engenharia

[www.atelier.pt](http://www.atelier.pt)



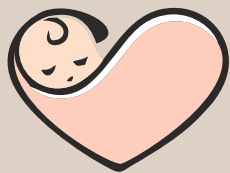


BERÇÁRIO E CRECHE

ATELIER<sup>®</sup>  
arquitectura e engenharia

[www.atelier.pt](http://www.atelier.pt)



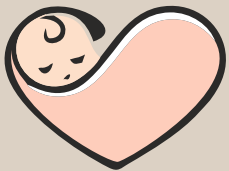


BERÇÁRIO E CRECHE

ATELIER<sup>®</sup>  
arquitectura e engenharia

[www.atelier.pt](http://www.atelier.pt)



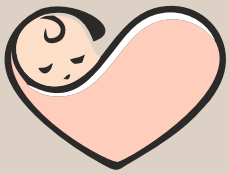


BERÇÁRIO E CRECHE

ATELIER<sup>®</sup>  
arquitectura e engenharia

[www.atelier.pt](http://www.atelier.pt)



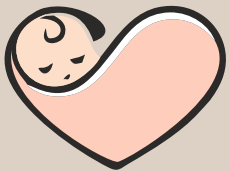


BERÇÁRIO E CRECHE

ATELIER<sup>®</sup>  
arquitectura e engenharia

[www.atelier.pt](http://www.atelier.pt)





BERÇÁRIO E CRECHE

ATELIER<sup>®</sup>  
arquitectura e engenharia

[www.atelier.pt](http://www.atelier.pt)



# ATELIER<sup>®</sup>

arquitectura e engenharia

[www.atelier.pt](http://www.atelier.pt)

EMPRESA CERTIFICADA - ISO 9001:2015  
SISTEMA DE GESTÃO DA QUALIDADE

